



Maxar

Innovative capabilities that connect Earth and space

Presented by Ilya Yudin

Public – External Recipients

MAXAR



In an era of unprecedented global transformations, organizations need fast, reliable insight to make impactful decisions.

Today, we can answer new questions *from space* in ways **never before possible.**



Maxar is a world leading
space technology and intelligence company.
We unlock the promise of space to help customers
solve problems on Earth and beyond.

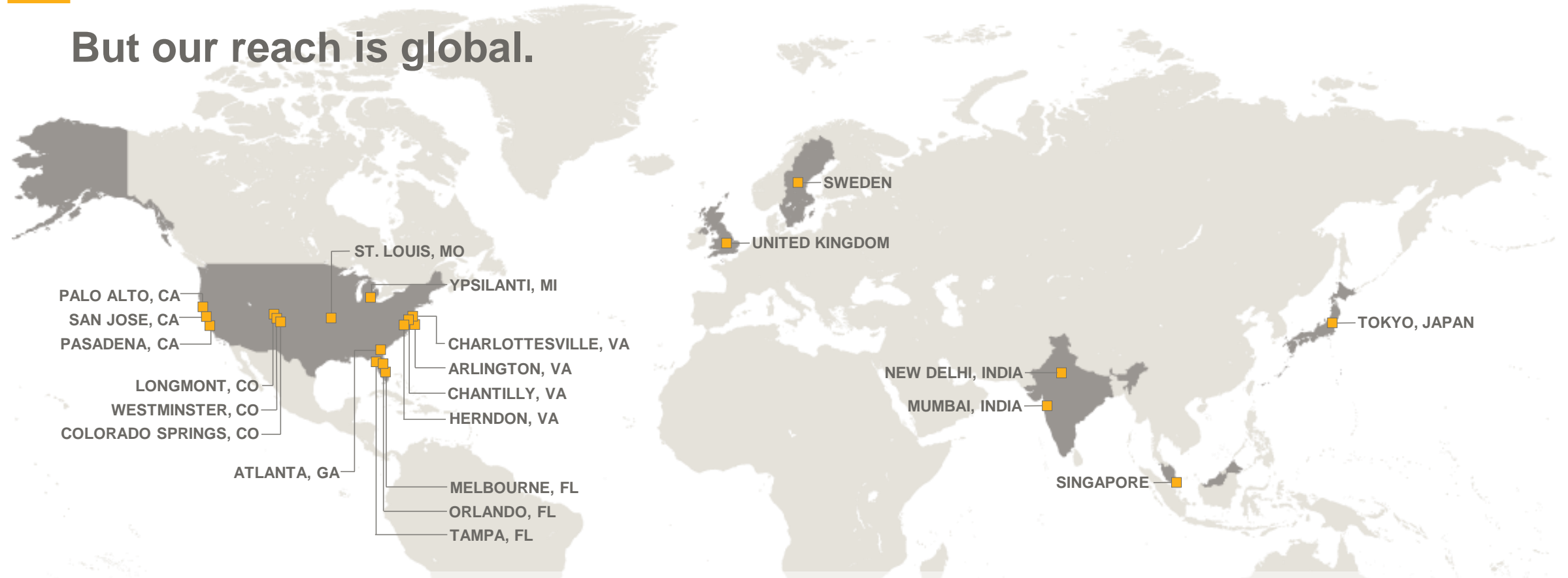


A leader in Space Infrastructure and Earth Intelligence, Maxar helps customers

- Detect, monitor and analyze global change
- Deliver broadband communications
- Advance space operations



But our reach is global.



More than **20**
locations

Customers
in more than **70**
Countries

170
Resellers

4,400
Employees



We operate the world's most advanced Earth imaging constellation.

Maxar's four imaging satellites capture **more imagery** at a **higher resolution** than other commercial imagery providers.

3.8M+

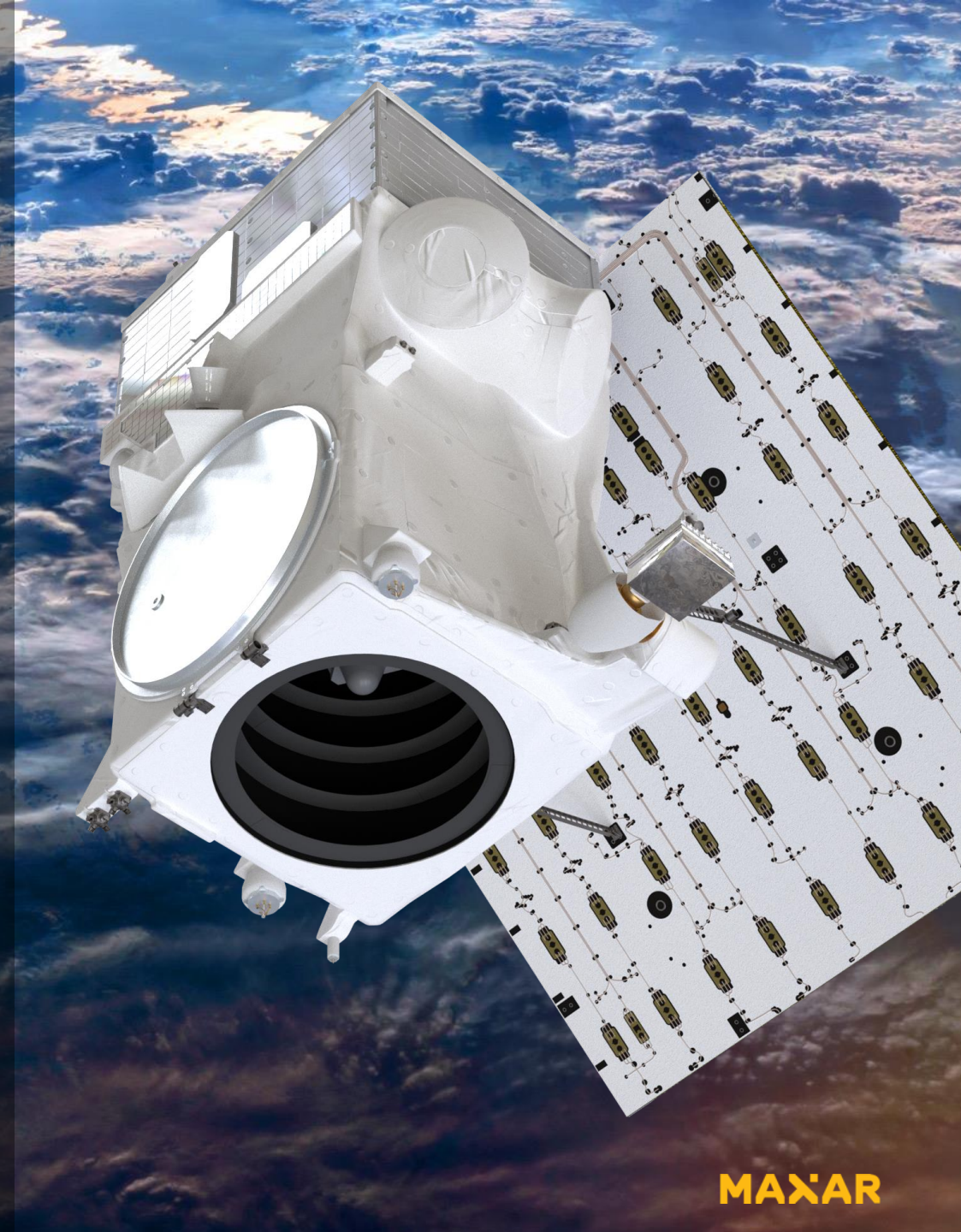
Square kilometers of Earth imagery capacity each day

1.4B

Square kilometers of Earth imagery capacity each year

LOOKING TO THE FUTURE

Maxar is designing and building WorldView Legion, a new generation of Earth observation satellites meant to serve our customers' evolving needs. WorldView Legion's six satellites will image Earth's most active areas more frequently, and at a higher resolution, than ever before.





We do a lot more than that
on Earth.

EARTH INTELLIGENCE CAPABILITIES

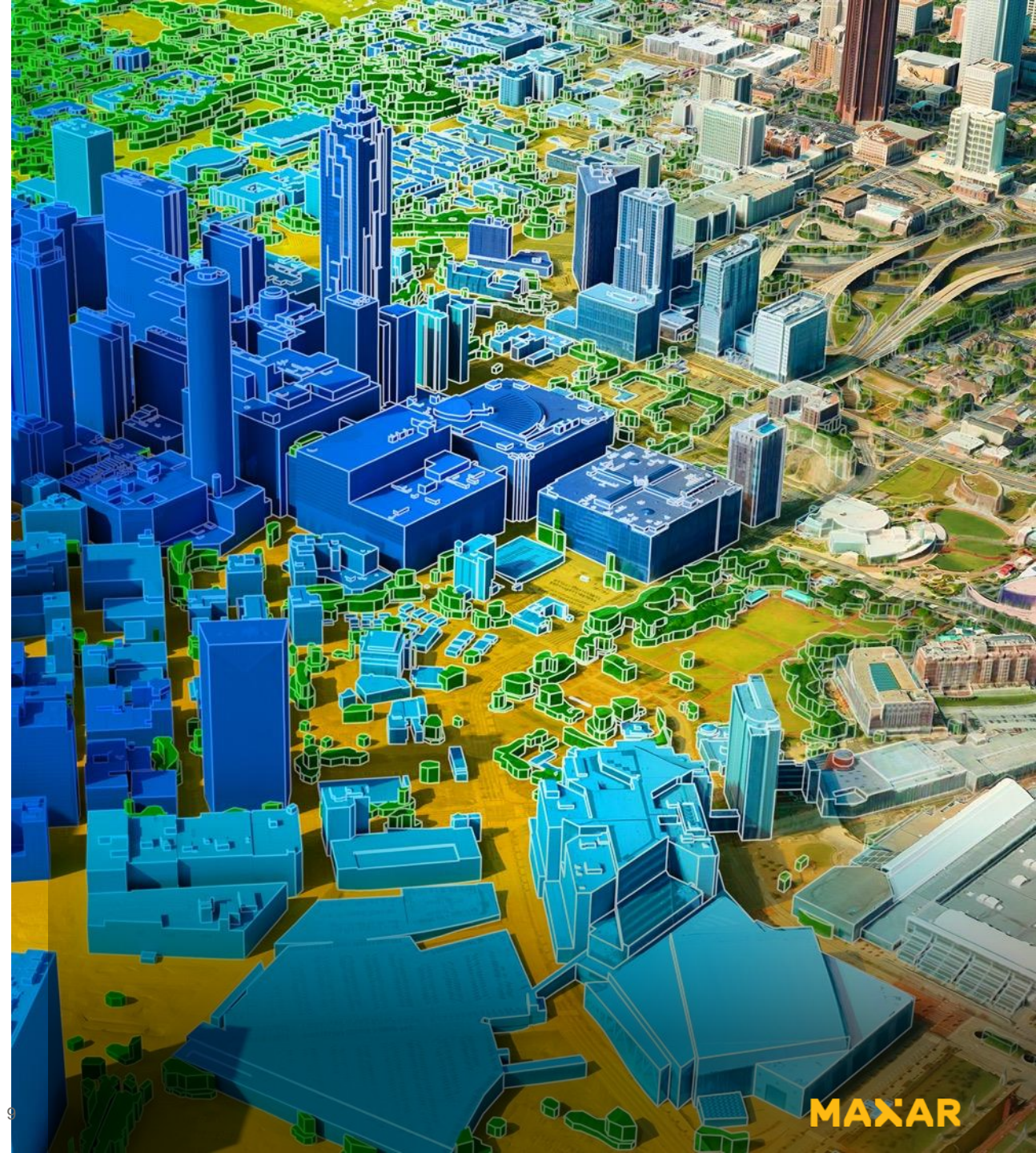
- Geospatial intelligence in 2D and 3D, fueled by satellite imagery and multi-source location data layers
- Analytics and geospatial services powered by machine learning and human expertise

125+

Petabytes of data
in our archive

700+

Software developers
on staff





We do a lot more than that
in space.

SPACE INFRASTRUCTURE CAPABILITIES

Design, manufacturing and operation for:

- Communications and Earth observation satellites
- Space exploration spacecraft
- Solar electric propulsion
- On-orbit satellite servicing vehicles
- Robotics for space operations and exploration

80+

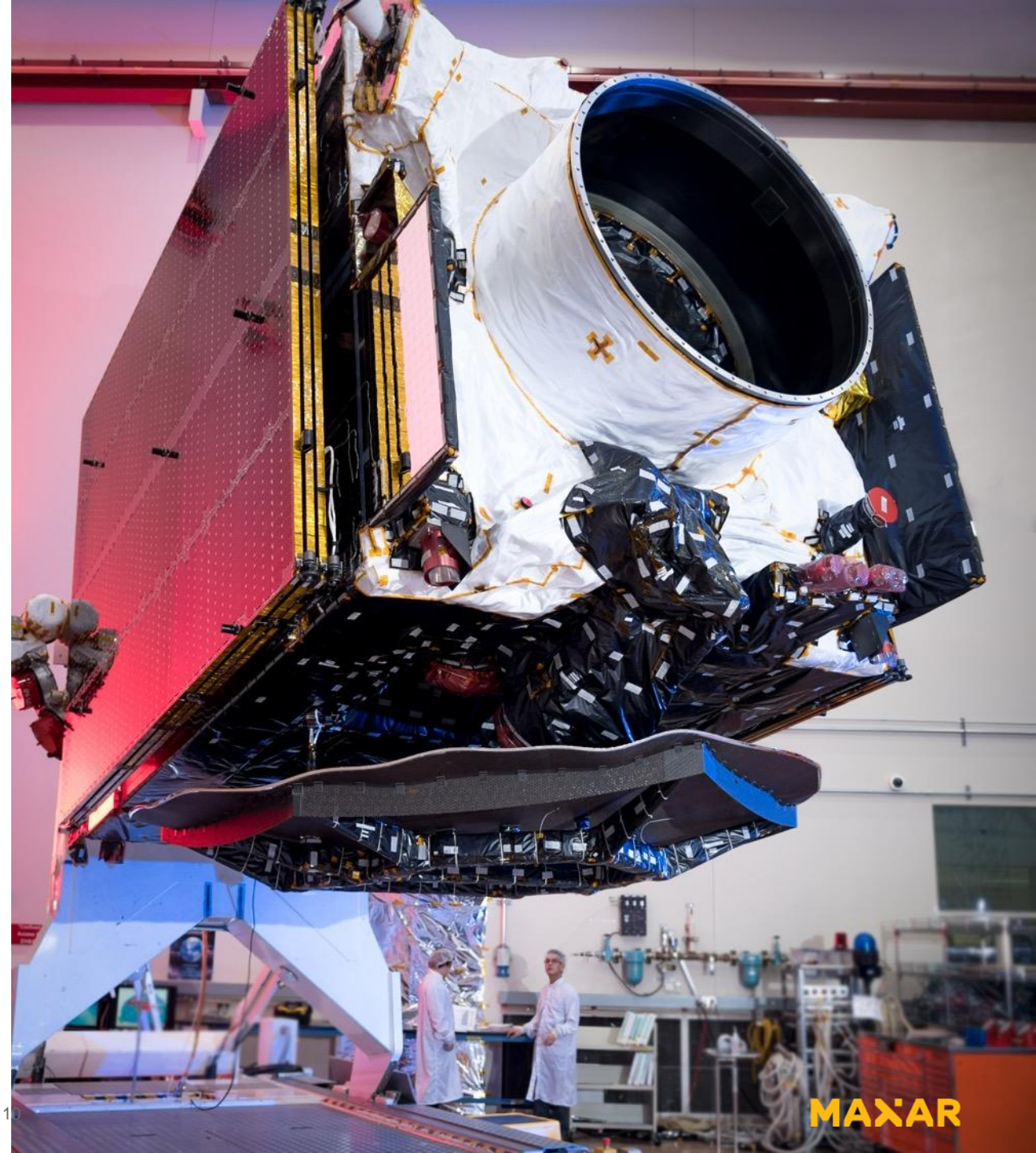
Maxar-built
geostationary
satellites on-orbit

285+

Maxar-built
spacecraft
launched

2,750

Combined years
on orbit





Maxar serves dozens of commercial industries worldwide

Companies across the globe work with Maxar to protect and advance their competitive edge—improving customer experience, maximizing efficiencies and improving outcomes.



Telecommunications & broadband connectivity



Navigation & location-based services



Infrastructure planning and development



Remote monitoring and risk mitigation



Maxar provides advanced capabilities across Earth and space



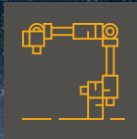
SPACECRAFT

Satellites and spacecraft for communications, Earth observation, space exploration and other missions



SUBSYSTEMS

Spacecraft components, such as solar arrays and solar electric propulsion



SPACE ROBOTICS

Nimble robotics for on-orbit servicing and space exploration



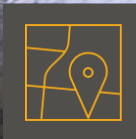
SATELLITE ACCESS

Direct collection requests and access to Maxar's imaging satellite constellation



GEOSPATIAL FOUNDATION

Highest quality satellite imagery, basemaps and 3D data over any location on Earth



PRECISION MAPPING

Accurate, up-to-date datasets to create high-quality maps



ON-DEMAND INTELLIGENCE

Industry-leading technology, data and expertise to solve the most complex geospatial challenges



GEOSPATIAL SERVICES

Insights from machine learning and our team of geospatial expert analysts



Space Infrastructure

Maxar has been a trusted partner in commercial and government missions for more than 60 years. Our Space Infrastructure capabilities date back to the Apollo moon landing, and we continue to be at the forefront of innovation in space.

300+

Maxar-built
spacecraft launched

2,750

Combined years
on orbit

80+

Communication
satellites on orbit

2.4+

Billion people rely on
broadcasting services powered
by Maxar-built satellites



Space Infrastructure

Product offerings



SPACECRAFT

Satellites and spacecraft for communications, Earth observation, space exploration and other missions



SUBSYSTEMS

Spacecraft components, such as solar arrays and solar electric propulsion



ROBOTICS

World leader in robotics for space, planetary exploration, on-orbit satellite servicing and terrestrial applications





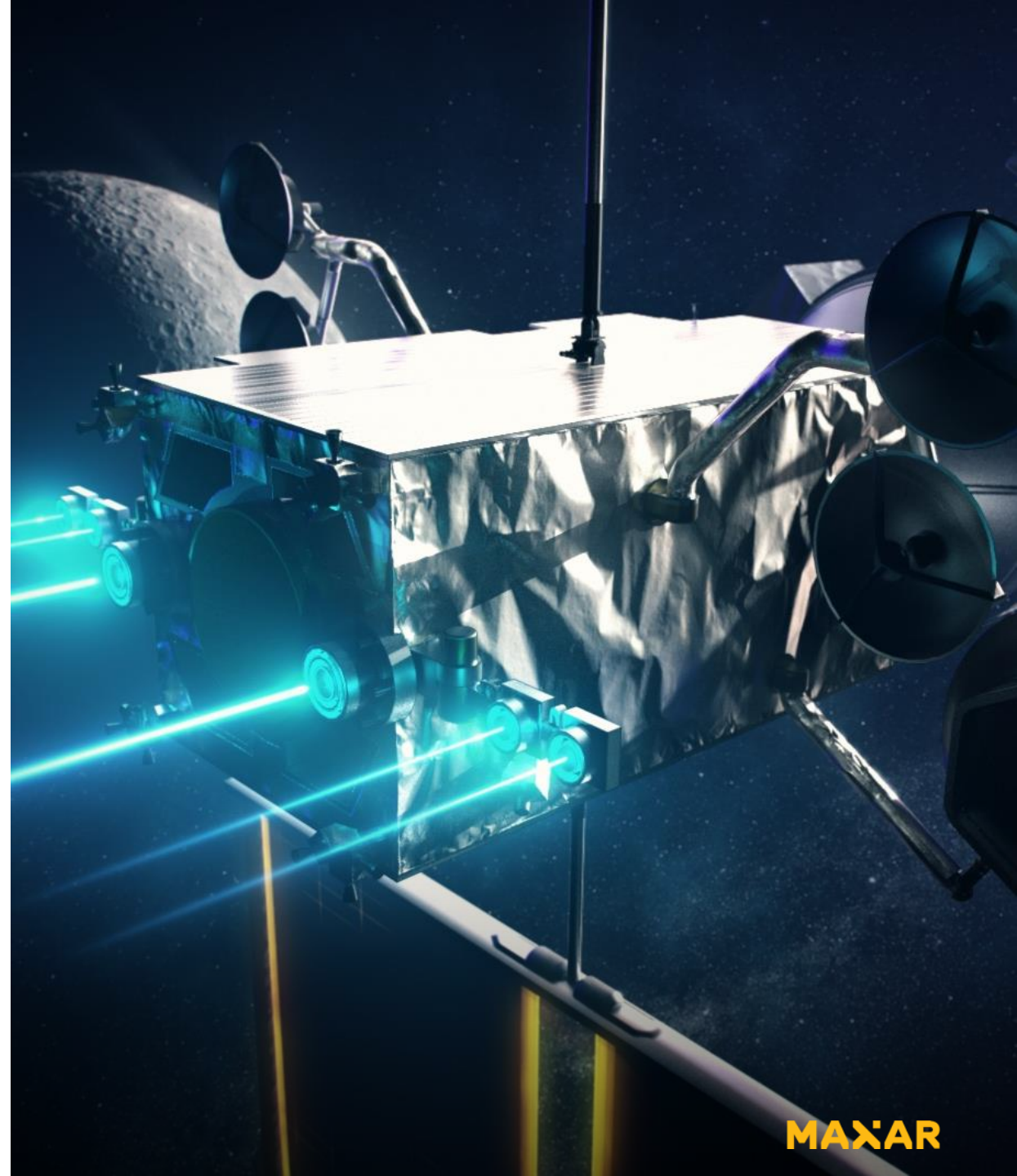
Pioneering innovative technology for NASA missions

Since humans first began exploring our solar system, Maxar has been supporting NASA with advanced capabilities and resilient infrastructure.

RETURNING ASTRONAUTS TO THE MOON
with the Power and Propulsion Element for the lunar Gateway

EXPLORING A NEW KIND OF ASTEROID
with a spacecraft for the first mission to explore 16 Psyche, an asteroid believed to be made of metal

TRACKING ATMOSPHERIC POLLUTION
with pollution monitoring sensor TEMPO on proven commercial spacecraft





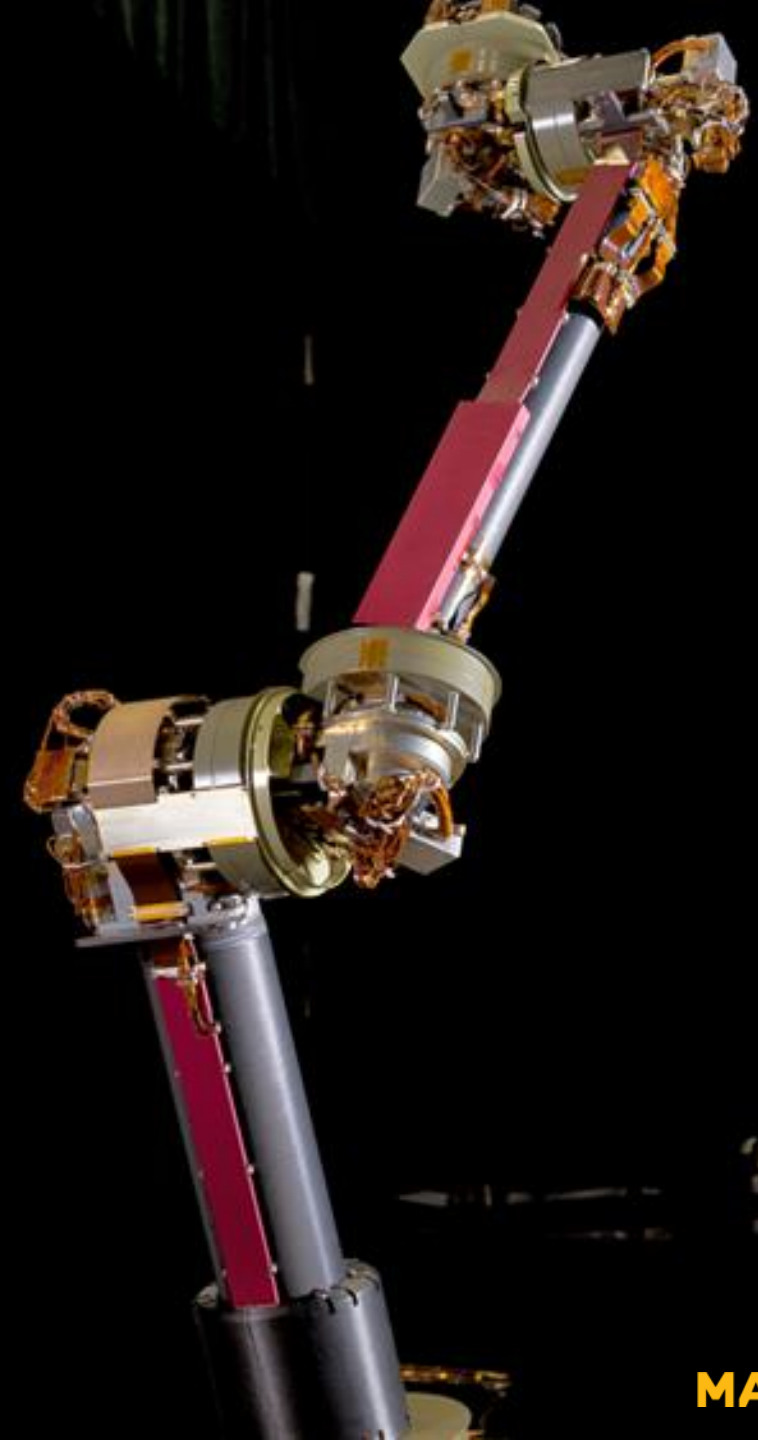
Reaching farther into space

As humanity expands its reach across space, Maxar is developing critical technologies for sustainable space exploration and on-orbit operations.

POWERING THE SEARCH FOR LIFE ON MARS

with robotic arms, including one for the recently landed Perseverance rover

EXTENDING SATELLITE LIFE SPANS with robotic arms designed for on-orbit assembly and service





Earth Intelligence

Maxar capabilities in Earth Intelligence help customers map, detect and predict change across the globe. Fueled largely by Maxar's own constellation of high-resolution imaging satellites, we provide high-resolution satellite imagery and derived data layers, machine learning and rich domain knowledge so organizations can make decisions with confidence.

3.8M

Square kilometers of Earth imagery capacity each day

125+

Petabytes of data in our archive

20-year

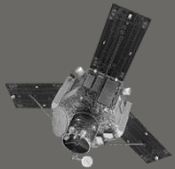
Inventory of global change in high-resolution



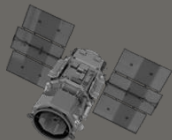
The Maxar satellite constellation

Maxar owns and operates the world's most sophisticated Earth imaging satellite constellation, providing the foundation for Maxar's capabilities in Earth Intelligence.

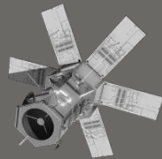
RETIRED / IMAGERY AVAILABLE IN ARCHIVE



IKONOS



QuickBird

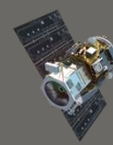


WorldView-4

ON-ORBIT / NEW AND ARCHIVE IMAGERY AVAILABLE



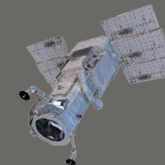
WorldView-1



GeoEye-1

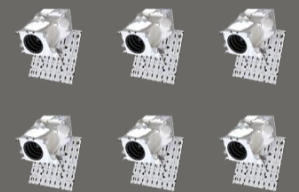


WorldView-2



WorldView-3

In production



WorldView Legion



Our next-generation imaging satellites

WorldView Legion is a fleet of six high-performing satellites that dramatically expands our ability to revisit the most rapidly changing areas on Earth to better inform critical, time-sensitive decisions.

- Will enable up to 15 revisits per day
- Triples Maxar's capacity to collect 30 cm class imagery
- Triples our overall capacity over high-demand areas
- Highest image quality and geometric accuracy available
- Simultaneous tasking, image and downlink with customer ground stations
- Compatible with global infrastructure and access programs for Maxar customers





Earth Intelligence

Product portfolio



SATELLITE ACCESS

Direct collection requests and access to the world's most advanced commercial imaging satellite constellation



GEOSPATIAL FOUNDATION

Highest quality satellite imagery, basemaps and 3D data over any location on Earth



PRECISION MAPPING

Accurate, up-to-date datasets and a collaborative mapping space to create high-quality maps



ON-DEMAND INTELLIGENCE

Industry-leading technology, data and expertise to solve the most complex geospatial challenges



GEOSPATIAL SERVICES

Insights from machine learning and our team of geospatial expert analysts





Geospatial foundation

Highest quality satellite imagery, basemaps and 3D data over any location on Earth



The highest-quality satellite imagery

OPTICAL IMAGERY

- Native 30 cm resolution and derived 15 cm HD imagery
- < 5 m CE90 positional accuracy
- Multispectral diversity

IMAGERY BASEMAPS

- Stunning, virtually seamless
- Accurate, consistent and actionable
- Local, regional and global scale

ANALYSIS-READY DATA

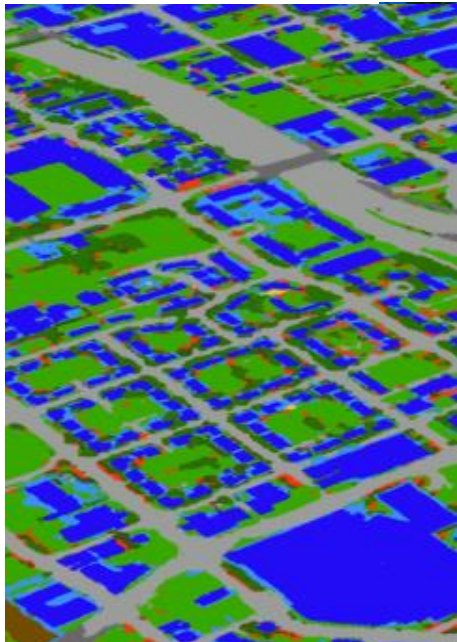
- Preprocessed time-series stacks of imagery
- Aligned and produced at a set standard
- Subscription access to our 125+ petabyte archive



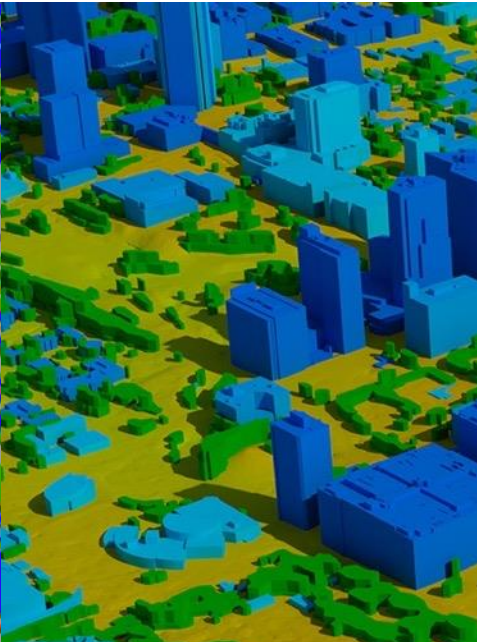


Precision3D

See the world how it really is, in fully immersive 3D



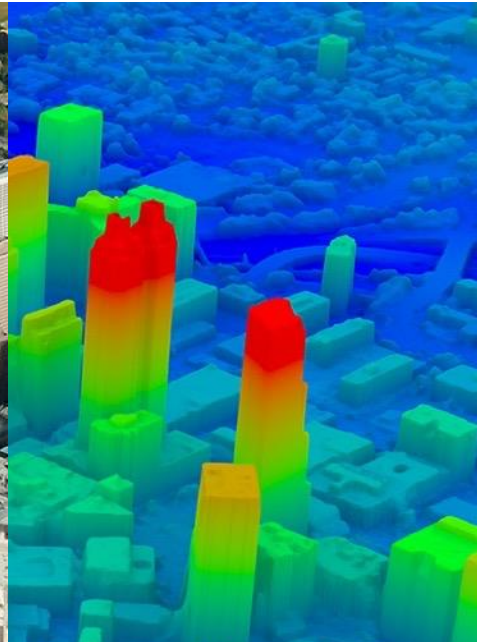
**CLUTTER
CLASSES**



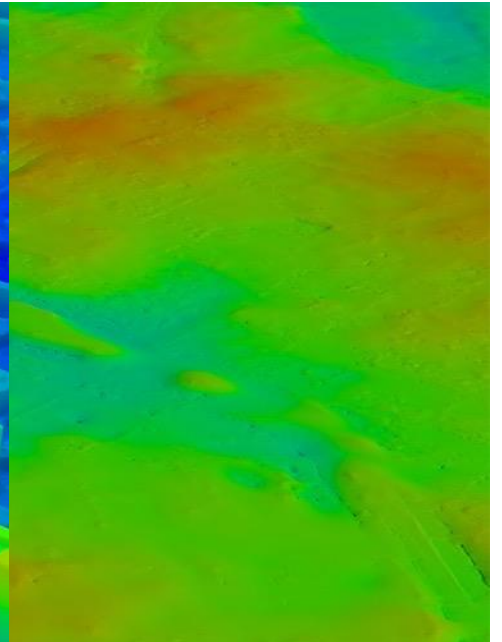
**VECTOR
BUILDINGS**



**3D SURFACE
MODEL**



**DIGITAL SURFACE
MODEL**



**DIGITAL TERRAIN
MODEL**



**Explore innovative
capabilities that connect
Earth and space at**
www.maxar.com

MAXAR

MAXAR.COM